

Arpeggio

Arpeggio is the official quarterly journal of the Philadelphia Musicians' Union • October/November 2022, Issue No. 13



Official Notice

Any notice or information that appears in this publication will serve as an official notice to the membership.

In This Issue...

<u>Local 77 News</u>	<u>3</u>
<u>Secretary-Treasurer's Report</u>	<u>6</u>
<u>Financial Statement & Report</u>	<u>7</u>
<u>TMA Conference Report</u>	<u>17</u>
<u>Membership Activity</u>	<u>19</u>
<u>New Member Spotlight</u>	<u>22</u>
<u>Unfair List</u>	<u>25</u>
<u>Labor Day Weekend 2022</u>	<u>26</u>
<u>Executive Board Minutes</u>	<u>28</u>

In Memoriam

Frank Leone
1939 - 2022

Leon Mitchell
1934 - 2022

Harry Reinmuth
1927 - 2022

Arpeggio is the official quarterly journal of the Philadelphia Musicians' Union Local 77, AFM

Officers

Ellen Trainer, *President*
Marjorie Goldberg, *Vice President*
Jarred Antonacci, *Secretary-Treasurer*

Executive Board

Rebecca Ansel
David Fay
Robert Suttman

AFM Convention Delegate

Marjorie Goldberg

Alternate AFM Convention Delegate

Laura Munich

Contact Information

1420 Locust St., Suite 300, Philadelphia, PA 19102
(215) 985-4777 • local77@afm.org
www.local77afm.org

Office Hours

Monday - Thursday 10am-4pm
Friday 10am-1pm

Arpeggio Editor

Jarred Antonacci

Local 77 News: Making Our Mark In The Community, At Conferences, And Beyond

By Marjorie Goldberg, Vice President



Happy Fall! Our members, and executive board have been very busy moving into this new season.

During Labor Day Weekend, our members shared their talents in an unprecedented sixteen performances funded by the [Music Performance Trust Fund](#) (MPTF) and organized by Local 77. From an intimate duo to a rousing nine-piece marching band, the concerts brought music to Philadelphia's Germantown, Fishtown, Center City, and Cobbs Creek neighborhoods, to the Labor Day Parade on Columbus Boulevard, and beyond. Some great photos of our members in action are featured in this newsletter. MPTF, which is funded by royalties from the sale of recordings made under AFM contracts, is a nonprofit service organization dedicated to presenting free-admission, high-quality live music performed by professional musicians. If you would like to learn how you can organize an MPTF performance, live or streaming, [please email me](#). (Note: All streaming MPTF performances are 100% funded through the end of the year!)

In July, member musicians and officers attended three of the five AFM annual conferences.

- Local 77 Executive Board Member Bob Suttman attended the Theater Musicians Association (TMA) Virtual Conference and was re-elected to serve a second term as vice president of TMA in addition to his position as president of the Philadelphia TMA chapter.
- President Ellen Trainer attended the International Conference of Symphony and Opera Musicians (ICSOM) Conference hosted by Local 56 in Grand Rapids, MI. ICSOM currently has 53 participating orchestras, with more than 4,000 members, including our own Philadelphia Orchestra. ICSOM represents the larger budgeted orchestras. Unfortunately, due to their international tour, the ICSOM delegate for the Philly Orchestra could not attend.
- Brooke Beazley and I attended the Regional Orchestra Players' Association (ROPA) Conference hosted by Local 7 in Orange County, CA. At the time of the conference ROPA had 95 participating orchestras; as of October 4, there are now 96 with the Philadelphia Ballet Orchestra joining the ranks! ROPA's purpose is to enhance communication between the member orchestras and their locals. Brooke is the ROPA delegate for Opera Philadelphia and since they are in negotiations, we were invited to attend a special negotiating workshop run by the AFM's Symphonic Services Division. I was honored to have been elected as a member-at-large on the ROPA Board and am now also a member of the ROPA Equity, Diversity, and Inclusion (EDI) Work Group. I look forward to sharing information with our Local 77 IDEAS Council and our member orchestras.

Closer to home, we are proud to announce that President Trainer has been elected as a vice president of the [Philadelphia Council AFL-CIO](#), which comprises more than 100 local labor

unions representing over 200,000 workers, and fights to bring social and economic justice to working people by giving them a voice on the job, in politics, and in the community.

Speaking of workers' rights, many members of Local 77 are in contract negotiations and have carried out workplace actions. Wearing Local 77 t-shirts to rehearsals, leaving the pit or stage to re-enter as a united front, distributing informational leaflets to patrons, and voting to authorize a strike are just a few examples of how workers are building public awareness, leveraging power, and demonstrating solidarity as they engage with managements. Our Local 77 Organizer Scott Silber is an excellent resource as we learn to leverage collective action in support of our colleagues. We must remember, an injustice to one is an injustice to all!

Our solidarity extends to all workers, and Local 77 members have been supporting their Union Siblings at rallies around the city. We are so pleased the Philadelphia Museum of Art (PMA Union) workers are back at the table and their strike is over. Please continue to support the

Temple University Graduate Students' Association (TUGSA), the University of Arts Unions for both Faculty and Staff, as well as two union groups affiliated with the Pennsylvania Association of Staff Nurses and Allied Professionals (PASNAP) as they are working without contracts.

The AFM represents musicians across all genres, and Local 77 is proud to be a sponsor of the annual [Jazz Philadelphia Summit](#) for the third year in a row. Jazz Philadelphia is an organization with a mission to connect the people and musicians in our region who create, support, and present jazz to build a healthy sustainable jazz community that is recognized around the world. IDEAS Council Chair Laura Munich has been invited to be a panelist at the Summit's first ever Jazz Community Town Hall in a discussion entitled "Unlikely Allies: How artists, presenters, and audiences can build a new jazz economy".

In closing, the Local 77 executive board and officers urge all Union members to VOTE! In this midterm election, union rights are on the ballot. Please follow the [AFL-CIO's endorsements](#) of candidates who support worker's rights!

NOVEMBER 2022

SUN	MON	TUE	WED	THU	FRI	SAT
		1	2	3	4	5
6	7	8	9	10	11	12
13	14	15	16	17	18	19
20	21	22	23	24	25	26
27	28	29	30			



ACADEMY CHIROPRACTIC CENTER

WHO WE ARE

We are a chiropractic and massage therapy office located along the Avenue of the Arts that specializes in working with performers of all types. We not only help our patients recover from injuries, but also improve performance and posture.



WHY CHOOSE US

**WE HELP YOU
RECOVER FROM
INJURIES AND GET
BACK TO YOUR
LIFE FASTER**

Experienced

Founded in 1999, we have been working with musicians and performers for over 20 years. If something is bothering you, chances are we have seen it before.

Convenient

Located steps from the Academy of Music, we are a quick walk from most Center City venues. We also offer telemedicine consultations for those unable to be seen in person.

Affordable

Our services are covered by many insurance plans! No insurance? We offer assistance to students and those in need.

CALL TODAY TO SCHEDULE A CONSULTATION



1420 Locust St, R5
Philadelphia PA, 19102



(215) 546-4860



Academychiropracticcenter.com

Secretary-Treasurer's Report

By Jarred Antonacci, Secretary-Treasurer



The fall season is one of my favorite times of the year. I hope this season has been keeping you busy, as it seems everything is returning to “normal”.

Our fiscal year ended on May 31, 2022. Each year, Local 77 is responsible for filing a Form 990 and a Labor Organization Annual Report (LM-2). These documents are public record and are available online for anyone who wishes to view them. Every member has the right to request these documents directly from our office. If you are interested, please contact me. The following pages contain the Statement of Assets, Revenue, Expenses and the notes to the Financial Statement for FY'21-'22.

The total amount of dues collected (membership and work dues) for last year was up 28% to \$707,918. Our net assets at the end of the year increased by 21% from \$1,144,303 to \$1,238,364. This figure includes the value of the office space and the contents of the office inside Academy House, which is valued at approximately \$500,000.

Our operating expenses with regard to AFM International dues (per capita and work dues) increased by 30%, totaling \$139,659. This increase is actually positive, as the per capita increase reflects a growth in membership and the work dues increase reflects a growth in the earnings of our members. Our legal expenses were down by 20% to \$27,937. We increased our advertising budget significantly for last year. Advertising includes the publication and printing of the newsletter, as well as all shirts and other branded merchandise. The total amount spent on advertising last year was \$16,010.

Our membership count has grown significantly. Between October 2020 and October 2022 our membership has grown by 9.5% from 705 to 772! Let's keep this momentum going. Get involved and join a committee. Our Wage Scale Book is set to expire on December 31, 2022. If you are interested in joining the Wage Scale committee please let me know. Our strength is in our solidarity.

The members run the Union!

2022 Member Dues Price List

Annual Regular Member Dues: \$200

Student Members: \$100

Must be registered in an accredited school, college or university. When no longer a student, they convert to Regular Member without additional fees. Student Members have the same rights and obligations as Regular members, subject to all AFM and Local rules, regulations and Bylaws (Local/AFM fee waived).

Youth Members: \$100

Applicants must be age 20 or younger. Youth Members have the same rights and obligations as Regular Members, subject to all AFM and Local rules, regulations and Bylaws (Local/AFM fee waived).

Life Members: \$100

Minimum age requirement is 65 years old. Must have 35 cumulative years of AFM membership.

PHILADELPHIA MUSICIANS' UNION LOCAL 77, A.F.M.
Statements of Assets, Liabilities and Net Assets

Modified Cash Basis

May 31, 2022 and 2021

(See Independent Accountants' Review Report & Notes to Financial Statements)

ASSETS

	<u>2022</u>	<u>2021</u>
Current Assets		
Cash	\$ 320,570	\$ 309,727
Grant receivable	--	16,024
	<u>320,570</u>	<u>325,751</u>
Property and Equipment		
Building	485,200	262,588
Furniture and fixtures	1,850	37,083
Office equipment	26,823	23,127
	<u>513,873</u>	<u>322,798</u>
Less: accumulated depreciation	24,261	54,065
	<u>489,612</u>	<u>268,733</u>
Other Assets		
Investments at fair value	428,162	546,457
Security deposit	4,000	4,000
	<u>432,162</u>	<u>550,457</u>
Total Assets	<u>\$ 1,242,344</u>	<u>\$ 1,144,941</u>

LIABILITIES AND NET ASSETS

Current Liabilities		
Credit card payable	\$ 3,980	\$ 638
Total Current Liabilities	<u>3,980</u>	<u>638</u>
Net Assets - unrestricted	<u>1,238,364</u>	<u>1,144,303</u>
Total Liabilities and Net Assets	<u>\$ 1,242,344</u>	<u>\$ 1,144,941</u>

PHILADLEPHIA MUSICIANS' UNION LOCAL 77, A.F.M.

Statements of Revenue, Expenses and Changes in Net Assets

Modified Cash Basis

May 31, 2022 and 2021

(See Independent Accountants' Review Report & Notes to Financial Statements)

	<u>2022</u>	<u>2021</u>
Operating Revenue		
Member dues	\$ 707,918	\$ 552,687
Grant revenue - ERC	7,600	65,555
Grant revenue	4,860	--
Advertising income	1,975	843
	<u>722,353</u>	<u>619,085</u>
Operating Expenses	<u>590,175</u>	<u>533,278</u>
	132,178	85,807
Investment Income (Loss)		
Interest and dividends	11,628	2,122
Realized gain on sale of investments	9,383	12,981
Unrealized investment gain(loss)	(53,313)	11,994
	(32,302)	27,097
Less: Investment fees	5,815	2,595
	(38,117)	24,502
Change in Net Assets	94,061	110,309
Net Assets - beginning of year	<u>1,144,303</u>	<u>1,033,994</u>
Net Assets - end of year	<u>\$ 1,238,364</u>	<u>\$ 1,144,303</u>

PHILADELPHIA MUSICIANS' UNION LOCAL 77, A.F.M.

Notes to Financial Statements

May 31, 2022 and 2021

(See Independent Accountants' Review Report)

Note 1 - Nature of Activities

The Philadelphia Musicians' Union Local 77 A.F.M was established for the purpose of negotiating working conditions, wages, and benefits for its members. The organization represents musicians in Philadelphia County, along with specified communities in Bucks, Delaware, and Montgomery Counties in Pennsylvania and Burlington and Camden Counties in New Jersey. Members pay annual dues and contribute working dues to the Union based upon a percentage of local scale wages as established under a collective bargaining agreement.

Note 2 - Summary of Accounting Policies

Basis of Accounting

The financial statements of the Union are prepared under the modified cash basis of accounting, which is a comprehensive basis of accounting other than generally accepted accounting principles. Consequently, revenue is recognized when received, rather than when earned or due, and expenses are recognized when paid rather than when the obligation is incurred.

In addition, purchases of fixed assets are capitalized, related depreciation is recorded, investments in marketable securities are reported at fair market value and the related change in fair value is included in investment income.

Estimates

The preparation of financial statements in conformity with the modified cash basis of accounting requires management to make estimates and assumptions that affect certain reported amounts and disclosures. Accordingly, actual results may differ from those estimates.

Cash and Cash Equivalents

The Union considers cash in depository accounts and short term investments issued with an original maturity of three months or less to be cash equivalents.

PHILADELPHIA MUSICIANS' UNION LOCAL 77, A.F.M.

Notes to Financial Statements

May 31, 2022 and 2021

(See Independent Accountants' Review Report)

Note 2 - Summary of Accounting Policies (continued)

Fixed Assets and Depreciation

Fixed assets are stated at cost. Expenditures for repairs and maintenance are charged to expense as incurred.

Depreciation is determined using the straight line method over the estimated useful lives of the related assets as follows:

	<u>Years</u>
Building	39
Furniture and fixtures	10
Office equipment	3-7

Depreciation expense for the years ended May 31, 2022 and 2021 was \$11,338 and \$4,097, respectively.

Advertising Cost

The Union charges to expense the cost of advertising as incurred. Advertising expense for the years ended May 31, 2022 and 2021 was \$16,010 and \$3,368, respectively.

Income Taxes

The Union is qualified under Internal Revenue Service code section 501(c) (5) as a tax exempt labor organization; as such a provision for income taxes is not provided.

The organization files income tax returns in the U.S. federal jurisdiction, and is no longer subject to examinations by tax authorities for years ending before May 31, 2018.

The Union is subject to routine audits by the Internal Revenue Service, however, there are no audits for any tax periods currently in progress. For the years ended May 31, 2022 and 2021, no interest or penalties were required to be recognized.

Subsequent Events

Management has evaluated subsequent events through August 25, 2022, the date on which the financial statements were available to be issued. Management has determined that no additional disclosures were necessary.

PHILADELPHIA MUSICIANS' UNION LOCAL 77, A.F.M.

Notes to Financial Statements

May 31, 2022 and 2021

(See Independent Accountants' Review Report)

Note 3 - Concentrations of Credit Risks

The Union maintains cash balances at a financial institution. The accounts at the institution are insured by the Federal Deposit Insurance Corporation up to \$250,000. At May 31, 2022 the Union's uninsured cash balances maintained in the financial institution totals \$25,864.

The Union is subject to collective bargaining agreements covering its labor force. Working dues remitted by the Philadelphia Orchestra for the years ended May 31, 2022 and 2021 represented 81% and 78%, of total dues received.

Note 4 - Grant Receivable/Grant Revenue

The Employer Retention Tax Credit (ERTC), a provision of the Coronavirus Aid, Relief & Economic Security (CARES) Act was utilized by the Union to obtain refundable credits on qualified wages paid to employees who were retained under the Covid-19 pandemic.

The ERTC consists of both nonrefundable and refundable tax credits. The total ERTC credits for the years ended May 31, 2022 and 2021 are recorded as grant revenue in the amount of \$7,600 and \$65,555, respectively. Of these amounts, \$6,542 and \$51,523 were refundable, respectively.

In January 2022, the Union obtained a grant from the American Federation of Musicians in the amount of \$4,860. These funds will be utilized to engage a third party organizer to assist with the modernization and implementation of a member orientation program for current members and recruitment of new members.

Note 5 - Real Estate Owned

On May 22, 2020, the Union purchased real estate located at the Academy House located at 1420 Locust Street, Philadelphia, PA. During the fiscal year the facility was renovated. On April 1, 2022 the union relocated its office and opened the facility to its members.

Note 6 - Fair Value Measurements

As discussed in Note 2 the financial statements are presented under the modified cash basis of accounting. Because investments are stated at fair value, accounting principles generally accepted in the United States establish a fair value hierarchy that prioritizes the inputs to valuation techniques used to measure fair value.

PHILADELPHIA MUSICIANS' UNION LOCAL 77, A.F.M.

Notes to Financial Statements

May 31, 2022 and 2021

(See Independent Accountants' Review Report)

Note 6 - Fair Value Measurements (continued)

This hierarchy consists of three broad levels: Level 1 inputs consist of unadjusted quoted prices in active markets for identical assets, Level 2 inputs consist of observable inputs other than quoted prices for identical assets, and Level 3 inputs are unobservable for the investment and include situations where there is little or no market activity in the investment.

The Union uses appropriate valuation techniques based on the available inputs to measure the fair value of its investments. When available, the Union measures fair value using Level 1 inputs because they generally provide the most reliable evidence of fair value.

The following table sets forth by level, within the fair value hierarchy, the Union's investments at fair value as of May 31, 2022 and 2021.

		Fair Value Measurements at Reporting Date Using: Quoted Prices in Active Markets for Identical Assets
	<u>Fair Value</u>	<u>Level 1</u>
<u>May 31, 2022</u>		
Mutual and money market funds	<u>\$ 428,162</u>	<u>\$ 428,162</u>
<u>May 31, 2021</u>		
Mutual and money market funds	<u>\$ 546,457</u>	<u>\$ 546,457</u>

PHILADELPHIA MUSICIANS' UNION LOCAL 77, A.F.M.

Notes to Financial Statements

May 31, 2022 and 2021

(See Independent Accountants' Review Report)

Note 7 - Investments

Investments in registered investment companies (mutual funds) are recorded and reported at fair value based on quoted market prices of the shares held as of May 31, 2022 and 2021. Investments in certificates of deposit and government bonds are reported at fair values based on reported market value. Investments marked with an asterisk (*) represent 5% or more of the net assets. Purchases and sales are recorded on a trade-date basis and dividends are recorded when received. Realized and unrealized gains and losses are included in the statements of revenue and expenses.

	<u>2022</u>	<u>2021</u>
<u>Money Market Funds</u>		
Fidelity Government Money Market	\$ 12,100	177,541 *
	<u>12,100</u>	<u>177,541</u>
 <u>Fixed Income Funds</u>		
Doubleline Total Return Bond Fd Cl I	15,634	13,785
Fidelity Long-Term Treasury Bond Index Fd	46,469 *	44,224 *
Fidelity Short-Term Treasury Bond Index	--	12,084
Pimco Income Fund Institutional Fd	58,516 *	50,549 *
	<u>120,619</u>	<u>120,642</u>
 <u>Equity Funds</u>		
Akre Focus Fund Institutional	21,161	18,281
Alger Spectra Cl Z	13,149	30,283 *
AMG Yacktman Fund I	18,322	14,990
Columbia Small Cap Index Fund CL I2	29,953 *	27,429 *
CS Managed Futures Strategy Fd Cl I	30,796 *	22,247
DWS Rreef Real Assets Fd Instl Cl	13,839	--
First Eagle Global Cl I	26,725 *	22,635
First Eagle Overseas Cl I	19,441	17,005
Jensen Quality Growth Fd Cl Y	15,549	
Matthew Asian Growth & Income Institutional	17,044	16,562
Matthew Asian Dividend Institutional	--	13,219
Neuberger Berman Genesis Fd Inst Cl	--	17,876
Parnassus Core Equity Institutional	26,157 *	22,092
T Rowe Price Capital Appreciation I	31,054 *	25,655
Vanguard Dividend Growth Investor Cl	32,253 *	--
	<u>295,443</u>	<u>248,274</u>
	<u>\$ 428,162</u>	<u>\$ 546,457</u>

PHILADELPHIA MUSICIANS' UNION LOCAL 77, A.F.M.

Notes to Financial Statements

May 31, 2022 and 2021

(See Independent Accountants' Review Report)

Note 8 - Multiemployer Defined Benefit Pension Plan

The Union contributes to the American Federation of Musicians & Employers' Pension Plan (AFM&EPF) under the terms of collective-bargaining agreements that cover its administrative staff, executive board and officers.

The risks of participating in these multiemployer plans are different from single-employer plans in the following aspects:

- Assets contributed to the multiemployer plan by one employer may be used to provide benefits to employees of other participating employers.
- If a participating employer stops contributing to the plan, the unfunded obligations of the plan may be borne by the remaining participating employers.
- If the Union chooses to stop participating in its multiemployer plan, the Union may be required to pay the plan an amount based on the underfunded status of the plan, referred to as a withdrawal liability.

The Union has determined that the multiemployer defined benefit pension plan covering its employees is not individually significant. The total contributions made to the multiemployer defined benefit pension plan for the years ended May 31, 2022 and 2021 were \$23,288 and \$22,683, respectively.

Note 9 - Operating Leases

The Union leased its office under a non-cancelable operating lease that commenced October 1, 2004. The lease contained scheduled annual rental increases, and required the payment of the Union's proportionate share of annual property taxes and building operation expense. In April 2014 an amendment to the lease extended the lease term to November 30, 2021. Upon expiration of the lease, the Union continued to lease the office on a month to month basis through March 31, 2022 at which time they relocated to their new facility.

The office lease expense, including operating costs and utilities paid in the years ended May 31, 2022 and 2021, totaled \$33,445 and \$44,355, respectively.

PHILADELPHIA MUSICIANS' UNION LOCAL 77, A.F.M.

Notes to Financial Statements

May 31, 2022 and 2021

(See Independent Accountants' Review Report)

Note 10 - Related Party Transactions

Playcheck 77, Inc., a Pennsylvania corporation, was established in April 2021. The entity operates as a payroll service for the professional musicians and entertainers exclusively for the assistance and convenience of the Local 77 members. Playcheck 77, Inc. acts as the employer for the musicians and entertainers in their dealings with individuals, corporations and other groups that wish to utilize their services. Operations began in May, 2022.

The Union performs administrative services for Playcheck 77, Inc. The services include the collection of payroll and related withholdings, union dues and pension contributions; record keeping related to the participants in the program and maintenance of the books and records.

Note 11 - Risks and Uncertainties

The Union invests in various investment securities. Investment securities are exposed to various risks such as interest rate, market, and credit risks. Due to the level of risk associated with certain investment securities, it is at least reasonably possible that changes in the values of investment securities will occur in the near term and that such change could materially affect investment account balances and the amounts reported in the statement of assets, liabilities and net assets.

PHILADELPHIA MUSICIANS' UNION LOCAL 77, A.F.M.

Schedules of Operating Expenses

Modified Cash Basis

May 31, 2022 and 2021

(See Independent Accountants' Review Report)

	<u>2022</u>	<u>2021</u>
Administrative salaries	\$ 46,125	\$ 44,691
Executive board salaries	29,710	29,710
Officers salaries	133,250	130,000
Payroll taxes	19,677	18,963
Employee benefits	33,994	28,670
Pension expense	23,288	22,683
Advertising	16,010	3,368
Bank charges	1,124	848
Computer expense	4,384	4,077
Condo fees	15,489	15,189
Conferences and conventions	3,383	923
Contributions	500	--
Depreciation	11,338	4,097
Dues and subscriptions	614	1,264
Equipment lease and maintenance	3,898	3,192
Insurance	4,109	4,488
International and per capita assessments	139,659	107,119
Arbitration expenses	--	400
Negotiation expenses	--	1,317
Office supplies and expense	7,155	3,970
Postage and courier fees	1,232	968
Professional fees:		
Accounting and compliance	15,397	12,114
Legal - local representation	19,287	25,696
Legal - orchestra negotiations	8,650	9,425
Public relations	--	1,384
Political contributions	300	500
Rent	30,617	41,568
Strike fund	7,425	7,575
Telephone	10,732	6,312
Utilities	2,828	2,767
Total	<u>\$ 590,175</u>	<u>\$ 533,278</u>

Why Conferences?

A Report from the TMA annual Conference

By Robert Suttmann

Philadelphia Chapter TMA President, National TMA Vice President, Local 77 Executive Board



Our AFM encompasses all music created by professional musicians in the United States and Canada. From the Top 40 hit parade to the concert hall stage, from the pit of a theater to the corner-restaurant jazz trio, music feeds our collective soul daily. It punctuates the excitement of motion pictures and adds to media on the web. It's quite unusual to find media *without* musical underscoring. The AFM covers all of it. Every type of work environment is unique and we musicians tend to gravitate to one discipline or another. Although we become specialists in our field, the AFM does not and cannot.

Conferences grew from the need to ensure that the specific needs of each facet of our industry are heard by the national governing body. To date there are five player conferences within the AFM: International Conference of Symphony and Opera Musicians (ICSOM), The Organization of Canadian Symphony Musicians (OCSOM), Regional Orchestra Players Association (ROPA), Recording Musicians Association (RMA), and Theatre Musicians' Association (TMA). Each conference gathers yearly to share ideas and concerns relative to its field. Those meetings are always informative and inspiring. One immediately senses a national community of fellow professionals and recognizes common (or

individual) obstacles we face. AFM officers report to the body during these meetings, then the floor is opened up for questions and discussion. Members have the opportunity to share their issues *directly* with AFM officers!

At this year's TMA Conference held at the end of August, we heard from AFM President Ray Hair, Secretary-Treasurer Jay Blumenthal, Touring/Theater/Booking Division Director George Fiddler, Legislative-Political Director Alfonso Pollard, Diversity Committee Chair Lovie Smith-Wright, Organizing and Education Director Michael Manley, and Local 802 President Tino Gagliardi, as well as from other Player Conference presidents and TMA officers and chapter delegates. Keynote Speaker Tania Richard ("Playing Shows with Challenging or Triggering Content") and Chicago Area Chapter Directors Chuck Webb and Trevor Jones ("South Side Jazz Coalition and Chicago Area Chapter Professional Community Engagement") shared engaging and timely presentations.

As musicians, we all innately understand the importance of networking in the advancement of our careers. Joining and participating in an AFM Conference takes networking to an exponential level. A chorus of many singing with one voice. If you haven't already done so, *please* join the chorus. Make your voice heard!

Find out more at: <https://www.afm-tma.org/>



COMPASS RE



Jonathan Fink is a real estate licensee affiliated with Compass RE. Compass RE is a licensed real estate broker and abides by equal housing opportunity laws. | 1624 Locust Street, FL 5, Philadelphia, PA 19103

Helping Musicians Buy and Sell Homes for Over a Decade.

We work collaboratively with Sellers and Buyers in and around the Philadelphia Region.

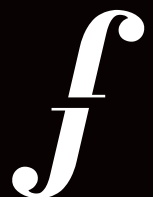
Jonathan Fink

REALTOR®

M 215.805.5276 | O 267.435.8015

jonathan.fink@compass.com

jonathanfinkgroup.com



JONATHAN FINK
GROUP

Membership Activity

New Members

1. Barkakati, Emily • 733 N. Ringgold Street, Philadelphia, PA 19130 • (240) 252-0537
emily.barkakati@gmail.com • Violin
2. Barnes, Micheal • 806 Worthington Drive, Exton, PA 19341 • (580) 574-0321
mbarnespercussion@gmail.com • Percussion (General)
3. Bickard, Alexander • 354 Lincoln Ave E, #1, Cranford, NJ 07016 • (631) 332-0228
abickard@gmail.com • Bass (Double)
4. Brinnel, Hailey • 479 Plymouth Road, Glenside, PA 19038 • (413) 426-4052
haileybrinnel@gmail.com • Trombone (Tenor), Vocals
5. DePoint, Joshua • 94 Mill Road, Apt 4, Red Hook, NY 12571 • (716) 908-7512
joshuadepoint@gmail.com • Bass (Double)
6. Dooley, Brendan • 808 N. 19th Street, Philadelphia, PA 19130 • (410) 251-4841
bcdooleyflute@gmail.com • Flute, Piccolo, Flute (Alto), Flute (Bass)
7. Fernandez, Pedro • 306 Canadian St., Houston, TX 77009 • (978) 790-4185
pedroperc@gmail.com • Percussion (General), Drum Set, Percussion (Latin)
8. Finlayson, David • 215 West 91st. Street, Apt 131, New York, NY 10024 • (917) 699-7495
dfinlaysonny@gmail.com • Trombone (Tenor)
9. Freivogel, John • 350 Cvergreen Road, Jenkintown, PA 19046 • (314) 749-3325
jfreivogel@gmail.com • Violin
10. Genemans, Andrew • 203 Benjamin Avenue SE, Grand Rapids, MI 49506 • (330) 807-8279
agenemans@gmail.com • Bassoon, Contrabassoon
11. Giess, Paul • 226 S. 51st. Street, Philadelphia, PA 19139 • (484) 653-7546
paulgiessmusic@gmail.com • Trumpet
12. Goffredo, Travis • 4013 Lauriston Street, Philadelphia, PA 19128 • (267) 825-0085
travisgoffredo@gmail.com • Percussion (General), Drum Set, Timpani
13. Gray, Christian • 1901 Manton Street, Philadelphia, PA 19146 • (978) 881-4076
christiangray3992@gmail.com • Bass (Double)
14. Hobbs Gardner, Cecelia • 666 Kent Avenue, Teaneck, NJ 07666 • (201) 390-0386
chgegmail@aol.com • Violin
15. Joselin, Vilme • 5003 N. 12th Street, Philadelphia, PA 19141 • (267) 499-6770
joselinjr.vilme@gmail.com • Violin, Viola
16. Kappraff, Jonah • 5029 Wetheredsville Road, Baltimore, MD 21211 • (862) 205-9563
jonah.kappraff@gmail.com • Trumpet
17. Ku, Wei-Heng • 1127 Euclid Ave, Apt. 724, Cleveland, OH 44115 • (732) 829-5143
annieanneku@yahoo.com • Violin

New Members

18. Kuo, Conway • 160 . 85th Street #2B, New York, NY, 10024 • (917) 330-1388
conwayvn@hotmail.com • Violin, Viola
19. Lee, Meena • 32 Wilkinson Way, Princeton, NJ 08540 • (610) 564-9072
meenalee@yahoo.com • Violin
20. Lewis, Michael • 3276 Aramingo Avenue, Philadelphia, PA 19134 • (570) 768-1128
mlewis9761@gmail.com • Piano, Celeste, Organ, Harpsichord
21. Loftus, Mary • (215) 280-4674 • loftusm2@gmail.com • Violin
22. Long, Kevin • 620 West Fairmount Street, Coopersburg, PA 18036 • (610) 751-4653
coldstream@ptd.net • Trumpet, Trumpet (Piccolo)
23. Manalo, Bernadette • 10005 Grandview Drive, Denton, TX 76207 • (972) 533-7618
bernam9@gmail.com • Percussion (General), Timpani
24. Mattas, Dimitrios • 1570 Pine Street, Apt. 2R, Philadelphia, PA 19102 • (801) 726-5466
dmattas99@yahoo.com • Bass (Double), Piano
25. Newman, Mitchell • 1104 Morgan Avenue, Drexel Hill, PA 19026 • (818) 314-8533
mnewman1963@gmail.com • Violin
26. Pence, Nathaniel • 1133 Ellsworth Street, Philadelphia, PA 19147 • (314) 541-0991
npence123@gmail.com • Bass (Double), Bass (Electric)
27. Schilling, Timothy • 1123 Green Street, Apt. 3A, Philadelphia, PA 19123 • (267) 408-6098
timschillingmusic@gmail.com • Guitar, Bass (Electric)
28. Spratt, Norman “Skip” • 5 Evergreen Drive, Berlin, NJ 08037 • (609) 335-5000
skipspratt@gmail.com • Saxophone (Soprano, Alto, Tenor, Baritone), Piccolo, Flute, Alto Flute, Clarinet, Bass Clarinet
29. Stager, James • 426 McClellan Street, Philadelphia, PA 19148 • (484) 477-7875
jimstagerbass@gmail.com • Bass (Double), Bass (Electric)
30. Thompson, Jessica • 360 Cabrini Blvd. #60, New York, NY 10040 • (646) 265-5632
violajess20@gmail.com • Viola
31. Vaughen, James • 1706 Pine Street, Apt 3R, Philadelphia, PA 19103 • (804) 846-1227
jstephen3@gmail.com • Trumpet
32. Warcup, Alyssa • 1700 Chestnut Street, #514, Philadelphia, PA 19103 • (630) 551-5901
acwarcup@gmail.com • Viola
33. Weyman, Colin • 12 Whitman Ave, #2, Jersey City, NJ 07306 • (608) 346-8493
colinweyman@gmail.com • French Horn
34. Yhee, Sang • 84 Cortlandt Place, Tenafly, NJ 17670 • (201) 450-3493
sangyhee@gmail.com • Cello

Reinstated

1. Anderson, Joseph R.
2. Carlyss, Gerald
3. Chaffin, Michael
4. Cristofaro, Mark
5. Disarlo, Martha
6. Furaha-Ali, Yesseh
7. Haas, Jennifer C
8. Hussey, Sarah J.
9. Imamura, Nozomi
10. Jordan, Leon E
11. Jusell, Christopher
12. Kreuger, Raymond
13. Leeds, Jonathan
14. Levine, Andrea
15. Matthews, Ronald A.
16. McCommon, Barry
17. Neu, Peter
18. Ryan, Kerri Marie

Resigned

1. Bolding, Keoni
2. Feller, Bart
3. Han, Seungmin
4. Inloes, David
5. Luciano, Vincent
6. Mello, Christine M.
7. Tolbert, Alan
8. Yiu, Chieh-Fan

MEDICARE

FREE CONSULTATION AND ENROLLMENT SERVICES!

- Turning 65 in the next three months?
- Unsure of when and how to enroll?
- Confused or overwhelmed by your choices?
- Wondering whether to keep your employer coverage or transition to Medicare?

Then... Let's talk!

I am a licensed Life and Health Insurance Agent specializing in Medicare. I am also a violinist and member of Locals 77 & 802. I speak your language and understand your unique concerns.

CHG INSURANCE SERVICES
medicare made friendly



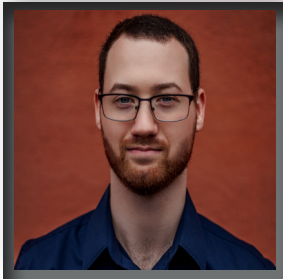
Cecelia Hobbs Gardner, JD

551.501.8991

info@medicarefriendly.com

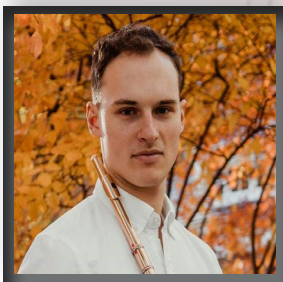
www.medicarefriendly.com

New Member Spotlight



Micheal Barnes, Percussion

Micheal Barnes is a freelance percussionist based in Philadelphia, PA. He has performed and presented research at the National Conference on Percussion Pedagogy, Percussive Arts Society International Convention, and CHRONOS Multi-Disciplinary International Percussion Symposium, having also performed at the National Flute Association Convention and International Clarinet Association ClarinetFest. Micheal is actively working to grow the repertoire available to percussionists, having premiered and commissioned more than two dozen works to date. His research interests include percussion pedagogy, embodied cognition, and conceptual metaphor theory. Micheal holds an MM in Music Theory and an MM in Percussion Performance from the University of Cincinnati College-Conservatory of Music and a BM from the University of Oklahoma. He is currently pursuing his DMA at Temple University. Micheal is a Vic Firth Educational Artist, Marimba One Educational Artist, and Zildjian Artist.



Brendan Dooley, Flute

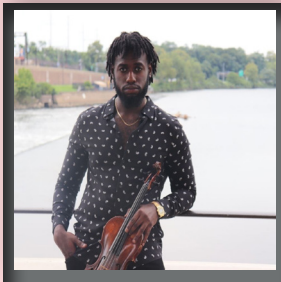
Brendan Dooley holds the position of principal flute with Opera Philadelphia, having previously been a fellow with The Orchestra Now. He has performed in such venues as New York's Carnegie Hall, Philadelphia's Verizon Hall, and Boston's Symphony Hall, and has collaborated with accomplished musicians like Boston Symphony pianist Deborah DeWolf Emery and Philadelphia Orchestra harpist Elizabeth Hainen in chamber performances throughout the Northeast. As a soloist, Brendan won first prize at the Redland Bowl Young Artist Competition and was a finalist in the South Carolina Flute Society's Young Artist Competition. Other accomplishments include appearing on NPR's *From The Top* and winning the position of Co-Principal Flute with the United States Coast Guard Band. Brendan studied with Jeffrey Khaner at the Curtis Institute of Music, Jim Walker at the University of Southern California, and Ransom Wilson at the Yale School of Music.



Paul Giess, Trumpet

Paul Giess is a trumpet player and educator living in Philadelphia who uses music and performance as a tool for community building. Rooted in the jazz tradition, Paul's musical taste is adventurous as he looks to bring new perspective to old ideas. In addition to his performance practice, Paul is the Education Coordinator at the Philadelphia Clef Club of Jazz and Performing Arts. He can be found performing and recording as a side musician with V. Shayne Frederick, Yolanda Wisher and the Afroaters, Son Step, Outside Sound, Sonic Liberation Front, Dr. B's Groove, Rosemeat, and Tubey Frank, to name a few. Paul self-released his debut album, *U Suite U*, in 2015, and his composition "Prayer for Mimi" is included in the Philadelphia Real Book. In 2018, Paul completed a McKnight Visiting Composers Residency, awarded through the American Composers Forum.

New Member Spotlight



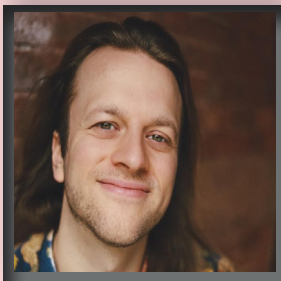
Vilme Joselin, Violin

A native of Philadelphia, violinist **Vilme Joselin** is an emerging young talent. Vilme began playing at age 13, and attended the High School for the Creative and Performing Arts in Philadelphia. Growing up, he was a member of the Philadelphia Youth Orchestra, and studied at Settlement Music School, Musicopia String Orchestra, and received the Marian Anderson Study Grant and the Florence A. Mack Award. Vilme studied with Deborah Buck at the Purchase Conservatory of Music at SUNY, then returned to Philadelphia to complete his undergraduate studies at Temple University with Dr. Eduard Schmieder, and Philadelphia Orchestra's Davyd Booth. Vilme currently teaches in the School District of Philadelphia and has performed on stages such as the Kimmel Center, Carnegie Hall, Lincoln Center and the Kennedy Center alongside groups such as the NEWorks Philharmonic, Black Pearl Chamber Orchestra, Main Line Symphony, Lower Merion Symphony, as well as the Depue Brothers Band.



Annie Ku, Violin

A native of Taiwan, violinist **Anne Ku** is a substitute violinist with The Philadelphia Orchestra and teaches an established studio of students in Princeton, NJ. Ms. Ku has also played with the Philadelphia Chamber Orchestra, the Princeton Symphony, and was concertmaster of Sinfonietta Nova from 2016-19. She was an adjunct faculty member of Cairn University in Langhorne, PA, from 2018-2021. An active chamber musician, Ms. Ku most recently performed Haydn's *Seven Last Words of Christ* with members of the Philadelphia Orchestra. Ms. Ku holds both Master's and Bachelor's degrees from The Juilliard School, where she studied with Catherine Cho and Robert Mann.



Michael Lewis, Piano

Philadelphia-based collaborative pianist and vocal coach **Michael Lewis** is a native of Pennsylvania. Michael studied at Ithaca College, where he received his Bachelor of Music degree in vocal performance and went on to receive his Master of Music degree in collaborative piano at Arizona State University under the guidance of Russell Ryan. Michael joined the faculty of Academy of Vocal Arts as a vocal coach and collaborative pianist in 2021 and previously worked as vocal coach and répétiteur on productions at Opera Philadelphia, Cincinnati Opera, The Glimmerglass Festival, Portland Opera, Mill City Summer Opera, and Tri-Cities Opera, Chorus Master at Arizona MusicFest and Tri-Cities Opera, and assistant music director in the Marion Roose Pullin Studio at Arizona Opera. At Opera Philadelphia, he regularly serves as principal coach on mainstage productions. In 2019, Michael formed Aural Compass Projects, a non-profit music organization dedicated to performing new and less-performed works. ACP strives to develop a moral compass that guides their work in aspiring towards equality and better representation in the music industry.

New Member Spotlight



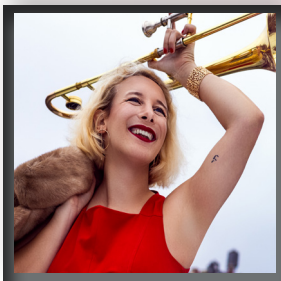
Timothy Schilling, Guitar

A graduate of the University of the Arts (BM '13), guitarist **Tim Schilling** has been making a name for himself by performing in a variety of genres and venues throughout the country. Tim embarked on a US tour with Matt McAndrew (NBC's *The Voice*, Season 7) and as a direct support act for The Plain White T's on their "Guantanamo And Beyond Tour" in 2015. In years following, Tim lived in Nashville, TN, where he performed on local radio with Transoceanic Records artist Katie Hargrove and other original acts. Upon relocating back to Philadelphia in 2018, he picked up where he left off by reconnecting with award-winning gospel producer and keyboardist Dana Sorey and fellow Philly guitarist, Ben O'Neill. Currently, Tim performs with The Eddie Bruce Experience as well as recording and teaching out of his home studio.



**Norman "Skip" Spratt,
Saxophone**

Norman "Skip" Spratt is a saxophonist and woodwind doubler who has performed with Natalie Cole, Tony Bennett, Johnny Mathis, Frank Sinatra Jr., Aretha Franklin, Tommy Tune, Ben Vereen, Joel Gray, The Ocean City Pops, and many others. Skip has been a featured soloist with jazz greats Randy Brecker, Bill Watrous, and John Faddis. He has recorded jingles for KYW Newsradio 1060, 6ABC WPVI-TV, Bally's Park Place, and TV shows in Montreal, Puerto Rico, Philadelphia, and Atlantic City. Skip has published many artist interviews and educational masterclasses in *Saxophone Journal* for Dorn Publications and *Saxophone Today*, as well as on his website SaxShed.com, which serves as a resource to saxophonists worldwide. Following a rewarding career as a band director, Skip is a member of the faculty at Rowan University, Stockton University, and LaSalle College High School. He holds a BM with honors in Jazz Saxophone and an MAT in Music Education from The University of the Arts.



Hailey Brinnel, Trombone

Hailey Brinnel is a trombonist, vocalist, and educator based in Philadelphia, PA. She was a finalist in the 2021 Sarah Vaughan International Jazz Vocal Competition and has performed around the world with artists and ensembles such as The Smithsonian Jazz Masterworks Orchestra, The Philly POPS, Sherrie Maricle and the DIVA Jazz Orchestra, Ingrid Jensen, and Anat Cohen. Her debut album, *I'm Forever Blowing Bubbles*, peaked at No. 13 on Amazon's Jazz New Releases chart and No. 44 on its Jazz Best-Seller chart. Brinnel is a faculty member at The University of the Arts, an educational program coordinator for instrumental jazz at The Kimmel Center, and a guest clinician bringing jazz education to classrooms throughout the city. She is a B.A.C. Musical Instruments Performing Artist and a signed artist on the New York-based Outside in Music record label.

UNFAIR

Gina Corso, Jersey Gina Entertainment

Josh Groban, c/o Gelfand, Rennert & Feldman

**It is a violation of Article 8, Section 3 of the
AFM Bylaws to work for an organization on the Unfair List.**

Article 8, Section 3: Members shall not render musical services for organizations, establishments, or people who are listed on the International UnfairList or for any other organization, establishment, or person who the member knew or reasonably should have known is owned or effectively controlled by an organization, establishment, or person listed on the International Unfair List. Any member who violates this Section shall be subject to penalties in accordance with Article 11, Section 13 [See Article 13, Section 4]

**Please contact the Local 77 office if you are asked
to play any engagement by an employer on the Unfair List.**

Our strength is in our solidarity.

Labor Day W

Between September 2-5, 2022, Local 77 hosted sixteen Labor Day performances that were funded by the Music Performance Trust Fund (MPTF). To find out more about MPTF, please contact the office of Local 77.



Ajibola Rivers (left) and Daniel Espie perform at Harriet's Bookshop in Fishtown.



Denise King and her band- Napoleon Black (left), Lee Smith, Anwar Marshall, Luke O'Reilly, and Paul Giess- performing at the Cobbs Creek Community Environmental Center in West Philadelphia.



Local 77 President Ellen Trainer and IATSE International Vice President Michael Barnes embrace in solidarity at the AFL-CIO Labor Day parade on Columbus Blvd.



Jennie Lorenzo (left), Rebecca Ansel, Marjorie Goldberg, Jarred Antonacci, Steven Beskerone, Kevin Blanke, Leon Jordan Sr., Ellen Trainer, Leon Jordan Jr., Peter Neu, David Cianci, Andrew Neu, Gregory Riley, and Robert Suttman muster at Sheetmetal Workers' Local 19 Union Hall before the parade.



Anwar Marshall (left), Denise King, Steven Beskrone, Luke O'Reilly, and Gregory Riley get marchers and spectators off to a swinging start at the parade staging grounds.



Karen Schubert (left), Paul Arbogast, Brian Brown, Darin Kelly, and George Rabbai echo the celestial blue skies at the gazebo in FDR Park in South Philadelphia.

Weekend 2022



Rebecca Ansel (left), Kei Fukuda, Marjorie Goldberg, Linda Henderson, Susan Lerner, and Marc Seidenberg serenade families at Awbury Arboretum in Philadelphia's historic Germantown neighborhood.



Ajibola Rivers (center top) hosts a Young People's Concert featuring Ashley Vines, Keith Chasin, Brent Edmondson, Alexander Kislitsyn, and Alberta Douglas at Saint Mark's Lutheran Church in Conshohocken, PA.



Alex Moreno and his band at Taller Puertorriqueno in West Kensington.



Rivers hosts a second Young People's Concert featuring Daniel Espie, Matthew Jernigan, Connor O'Neill, and Daniel McCain at Saint Paul's Church in Elkins Park, PA.



VP Marjorie Goldberg (left), Jonathan Lovitz, PA State Representative Joe Ciresi, IATSE Local 8 President Matthew McIntyre, and Local 77 President Ellen Trainer cheese it up at the parade.



Philadelphia City Councilmember Isaiah Thomas (second from right) with his Labor Liason Carmella Green, VP Marjorie Goldberg, and President Ellen Trainer gather together before marching in the parade.

Executive Board Minutes

July 8, 2022

PRESENT: President Trainer, VP Goldberg, S-T Antonacci, Executive Board members Ansel, Fay, and Suttman are present. PROCEEDINGS: Meeting called to order by President Trainer at 10:05am. The Executive Board reviewed the minutes from the previous meeting. EB Suttman motioned to approve the minutes as amended. VP Goldberg seconds. VOTE: 5 approve. 0 opposed. S-T Antonacci reported on the profit and loss from June as well as the balance sheet. VP Goldberg motioned to accept the S-T report. EB Fay seconds. VOTE: 5 approve. 0 opposed. S-T Antonacci reported on the member activity since the previous meeting. To date, Local 77 has 751 members. There are ten new member applicants. EB Ansel motioned to accept the new member applicants. VP Goldberg seconds. VOTE: 5 approve. 0 opposed. Discussion held on the upcoming suspend/expel report. Discussion held on the upcoming Philadelphia Orchestra (POA) Members' Committee election. The POA musicians are slated to elect a new committee during their residency in Saratoga Springs, NY. S-T Antonacci reported on the communication that has been sent to all POA subs and extras that have been engaged to play since the beginning of the year. Local 77 has begun initiating conversations with all subs and extras regarding their membership in the Local. Subs and extras can elect to join Local 77 or pay an agency fee for the quarter that they were engaged. So far, several musicians have elected to join rather than pay the agency fee. It is our hope to get everyone into the Local as the POA members enter a negotiation year with management. Discussion held on an upcoming meeting scheduled with Kimmel

Center representatives regarding the jazz lobby performances that are scheduled for next season. President Trainer reported on the Chamber Orchestra of Philadelphia (COP). Discussion held on a compensation inquiry from management. VP Goldberg reported on the Philly POPS. The Orchestra Committee has reached out to management to begin the negotiation process, as the current CBA is set to expire on August 31, 2022. EB Ansel reported on the Ballet. The Orchestra Committee drafted and sent their CBA survey questions to the orchestra members, as they gear up for their upcoming negotiation. President Trainer reported on a meeting held with Opera Philadelphia management. S-T Antonacci reported that the new window decal would be installed in the coming days. Discussion held on the Local 77 Summer newsletter. Discussion held on hiring a business agent. President Trainer stressed the importance of a business agent, and the need to begin forming relationships with local restaurants and clubs. In the coming weeks, Local 77 will submit another Freelance Co-Funding proposal to the AFM International Office to assist in the funding of a potential business agent. President Trainer urged the Executive Board to participate in continuing education workshops and seminars in an effort to engage our members in a broader sense. President Trainer requested permission from the Executive Board to reimburse for travel to the International office in New York to join the AFM team for the Integrated Media Agreement (IMA) negotiations. EB Ansel motioned to approve reimbursing travel and hotel expenses. VP Goldberg seconds. VOTE: 5 approve. 0 opposed. S-T Antonacci reported that the AFSCME International Convention would be commencing on Sunday July 11, 2022. Local 77 members will be providing

live entertainment during three days of the convention. President Trainer reported on the Josh Groban tour that is scheduled to come through The Mann Center for the Performing Arts on Wednesday, July 14, 2022. Local 802 has officially requested to President Ray Hair that Josh Groban be placed on the International Unfair List. President Trainer requested that the Board approve Local 77 signing onto the letter. EB Ansel motioned to sign the letter. EB Suttman seconds. VOTE: 5 approve. 0 opposed. President Trainer motioned that the Board approve purchasing two tickets for the Josh Groban concert, in an effort to document the musicians who were engaged against the direction of their respective locals. VP Goldberg seconds. VOTE: 5 approve. 0 opposed. President Trainer reported that she has been officially nominated for a position on the Executive Board of the Philadelphia Council AFL-CIO. VP Goldberg motioned to adjourn. EB Ansel seconds. VOTE: 5 approve. 0 opposed. Meeting adjourned at 11:58am.

July 29, 2022

PRESENT: VP Goldberg, S-T Antonacci, Executive Board members Ansel, and Fay are present. PROCEEDINGS: Meeting called to order by S-T Antonacci at 1:04pm. The Executive Board reviewed the minutes from the previous meeting. VP Goldberg motioned to approve the minutes as amended. EB Fay seconds. VOTE: 4 approve. 0 opposed. S-T Antonacci reported on the membership activity since the previous meeting. To date, there are 745 members, and five new member applicants. VP Goldberg motions to approve the new members. EB Fay seconds. VOTE: 4 approve. 0 opposed. Discussion held on the Local 77 census report. S-T Antonacci reported on the quarter 2 AFM Per Capita report. Local 77 Per Capita dues were \$10,948.00.

Discussion held on the suspend/expel list. EB Suttman present at 1:16pm. Discussion held on the Philadelphia Orchestra (POA) substitute and extra musician list. Several communications have gone out to musicians engaged by the POA regarding their membership in Local 77 as a condition of employment, per the POA Trade Agreement. EB Fay reported on the POA residency at the Saratoga Performing Arts Center (SPAC). The POA musicians are going to be electing a new Members' Committee next week at their membership meeting. EB Suttman reported on an upcoming scheduled meeting with representatives from the Kimmel Center. VP Goldberg reported on the Philly POPS. Payments for the recent engagement in Atlantic City for Bocelli were late. On July 11, 2022 the Philly POPS musicians signed and submitted a letter of no confidence regarding the Chief Operating Officer. EB Ansel reported on the Philadelphia Ballet. The Ballet Orchestra Committee will be meeting for a series of prep meetings ahead of the upcoming negotiation. VP Goldberg reported on Opera Philadelphia negotiations. S-T Antonacci reported on Playcheck77 and provided a financial report since the first payroll cycle in May. VP Goldberg reported on the ROPA Conference. Discussion held on the presentation given by EB Suttman and TMA President Heather Boehm at the Conference. EB Suttman motioned to adjourn. EB Fay seconds. VOTE: 4 approve. 0 opposed. Meeting adjourned at 1:54pm.

August 17, 2022

PRESENT: President Trainer, VP Goldberg, S-T Antonacci, Executive Board members Suttman, and Fay are present. PROCEEDINGS: Meeting called to order by S-T Antonacci at 3:30pm. The Executive Board reviewed the minutes from the previous meeting. EB Fay motioned to approve the minutes as amended. VP Goldberg seconds. VOTE: 4 approve. 0 opposed. S-T Antonacci reported on the profit and loss as well as the balance sheet from July. EB Fay

motioned to approve the financial report. EB Suttman seconds. VOTE: 4 approve. 0 opposed. S-T Antonacci reported on the membership activity. To date, Local 77 has 752 members. VP Goldberg motions to accept six new members. EB Fay seconds. VOTE: 4 approve. 0 opposed. Discussion held on the ICSOM pre-conference survey. EB Fay reported on the Philadelphia Orchestra (POA). The POA musicians elected a new Members' Committee, which contains the same personnel as the previous Members' Committee as well as a new Artistic Advisory Committee. The POA leaves for their European tour in the coming days. Discussion held on safety protocols for the European tour as well as ongoing grievances for CBA violations. EB Ansel is present at 3:58pm. EB Suttman reported on an in-person meeting held with representatives at the Kimmel Center surrounding a Pamphlet B / Rule 24 discussion. VP Goldberg reported on the Philly POPS. The POPS management and POPS musicians have their first negotiation this coming Friday. POPS musicians recently performed the score to the film Star Wars: Return of the Jedi at The Mann Center, and will return in the fall with the score to The Godfather. EB Ansel reported on the Philadelphia Ballet. The Ballet musicians are in negotiations with management, and the musicians are expecting to review the financial information in the coming weeks. VP Goldberg reported on the ongoing Opera Philadelphia negotiations. S-T Antonacci reported on the Fall edition of Arpeggio. Orchestra committee chairs have been contacted regarding their contribution to the publication. Discussion held on the upcoming Labor Day performances. MPTF is funding performances at 100% for the entire weekend, and several Local 77 members are involved. Discussion held on the Integrated Media Agreement in-person negotiations. S-T Antonacci reported on the Wage Scale Committee, which will begin meeting weekly and discussing revisions and potential changes for 2023. EB Suttman motioned to adjourn. EB Ansel seconds. VOTE: 4 approve. 0 opposed. Meeting adjourned at 4:35pm.

August 31, 2022

PRESENT: VP Goldberg, S-T Antonacci, Executive Board members Fay and Suttman are present. PROCEEDINGS: Meeting called to order by VP Goldberg at 2:02pm. The Executive Board reviewed the minutes from the previous meeting. EB Ansel present at 2:04pm. EB Fay motioned to approve the minutes as amended. EB Suttman seconds. VOTE: 4 approve. 0 opposed. S-T Antonacci reported on the membership activity since the previous meeting. To date, there are 759 members in Local 77. Discussion held on new member applications. EB Ansel motioned to accept eight new member applicants. S-T Antonacci presented the FY '20-'21 Financial Statement and Form 990 to the Board for review. Discussion held on the Financial Statement and Form 990. Discussion held on a reimbursement agreement between Local 77 and the payroll service, Playcheck77, Inc. for office hours that are used processing payroll for Playcheck77, Inc. S-T Antonacci motioned to accept the Financial Statement and Form 990. EB Fay seconds. VOTE: 4 approve. 0 opposed. Discussion held on the General Membership meeting, scheduled to be held on Monday, September 19, 2022 at 6pm. The Executive Board reviewed the minutes from the November, 2021 General Membership meeting. Discussion held on the Fall edition of Arpeggio. Discussion held on the Wage Scale Committee meeting. The Wage Scale Committee plans on meeting weekly, and updating the Board during the process. Discussion held on maintaining membership with the Philadelphia Cultural Alliance. EB Fay motioned to maintain our membership status. EB Ansel seconds. VOTE: 4 approve. 0 opposed. EB Fay updated the Board on the Philadelphia Orchestra (POA). The POA musicians are currently on their European tour. Before the musicians left for Scotland, there was a repertoire change due to COVID concerns. The initial flight departing Newark, NJ was

canceled and POA musicians needed to spend the night in New York while they awaited another flight. When musicians arrived in Scotland, all of the luggage was lost. Discussion held on numerous contractual violations from POA management while on tour. S-T Antonacci asked for permission to play an engagement with Rodney Marsalis and the Philadelphia Big Brass at the Annenberg Center in December, 2022. EB Ansel motioned to approve. EB Suttman seconds. VOTE: 4 approve. 0 opposed. VP Goldberg reported on the current negotiations with the Philly POPS. EB Ansel reported that the scheduled negotiation with the Philadelphia Ballet was cancelled, and has been rescheduled for September 1, 2022. VP Goldberg reported on the current negotiations with the Opera Company of Philadelphia. VP Goldberg asked for permission for President Trainer to perform the fundraising gala for the Philly POPS in September. EB Suttman motioned to approve. S-T Antonacci seconds. VOTE: 4 approve. 0 opposed. Discussion held on merchandise. EB Suttman motioned to spend \$1500 on t-shirts for upcoming work actions. S-T Antonacci seconds. VOTE: 4 approve. 0 opposed. Discussion held on the upcoming Labor Day weekend events sponsored by MPTF. In total there will be 16 performances by Local 77 members taking place from September 2-5, 2022. EB Ansel motioned to adjourn. EB Fay seconds. VOTE: 4 approve. 0 opposed. Meeting adjourned at 3:27pm.

September 14, 2022

PRESENT: President Trainer, VP Goldberg, S-T Antonacci, Executive Board member Ansel is present. PROCEEDINGS: Meeting called to order by President Trainer at 12:37pm. The Executive Board reviewed the minutes from the previous meeting. VP Goldberg motioned to approve the minutes as amended. EB Ansel seconds. VOTE: 3 approve. 0 opposed. S-T Antonacci reported on the profit and loss as well as the balance sheet from August, 2022. EB

Suttman present at 12:43pm. EB Ansel motions to accept the financial report. VP Goldberg seconds. VOTE: 4 approve. 0 opposed. S-T Antonacci reported on the membership activity since the previous Board meeting. To date, Local 77 has 760 members. There are three new member applicants since the previous meeting. VP Goldberg motions to accept the three new member applicants. EB Suttman seconds. VOTE: 4 approve. 0 opposed. Discussion held on the agenda for the upcoming General Membership meeting, scheduled for September 19, 2022 at 6pm. Discussion held on the recommendations that are scheduled to be put forth to the membership regarding Life, Student and Youth membership rates. Discussion held on the upcoming Fall edition of Arpeggio. The yearly financial statement from the Local 77 accounting firm, and conference reports will be among the items published in the next edition. S-T Antonacci reported to the Board on the latest discussions held within the Wage Scale Committee. Discussion held on the pension rate for the new Wage Scale Book. S-T Antonacci reported on a conversation held with representatives from the Cultural Alliance regarding Local 77's membership. Discussion held on a grievance that has been filed with the Philadelphia Orchestra Association. At the moment, The Association is delinquent in responding within the timeframe outlined in the Collective Bargaining Agreement. Local 77 anticipates a response in the coming days. VP Goldberg reported on the Philly POPS. The POPS musicians are planning a work action for their upcoming Moody Blues concert series at the Kimmel Center. POPS musicians are going to leaflet patrons. President Trainer reported on the Philadelphia Ballet negotiations. Discussion held on the Philadelphia Ballet negotiations. President Trainer reported on Opera Philadelphia. Musicians of the Opera orchestra are planning a variety of work actions for their upcoming series at the Academy of Music. VP Goldberg reported

that Local 77 needs to acquire more t-shirts. EB Suttman motions up to an additional \$3500 for both long and short sleeve shirts. S-T Antonacci seconds. VOTE: 4 approve. 0 opposed. President Trainer reported on her first Philadelphia Council AFL-CIO meeting as a newly appointed Vice-President. President Trainer reported on a conversation that was held with a representative from the Delaware Valley AFL-CIO regarding their need for entertainment at an upcoming event. VP Goldberg motions to adjourn the meeting. EB Ansel seconds. VOTE: 4 approve. 0 opposed. Meeting adjourned 1:47pm.

September 14, 2022

PRESENT: President Trainer, VP Goldberg, S-T Antonacci, Executive Board member Ansel, Fay, and Suttman are present. PROCEEDINGS: Meeting called to order by President Trainer at 10:07am. The Executive Board reviewed the minutes from the previous meeting. VP Goldberg motioned to approve the minutes as submitted. EB Fay seconds. VOTE: 5 approve. 0 opposed. S-T Antonacci reported on the membership activity. Since the previous meeting there are eight new member applicants. To date, the Local 77 membership count is 767. Discussion held on the General Membership meeting. There was no quorum, so no official business took place and no minutes will be recorded. Discussion held on the upcoming Arpeggio publication. S-T Antonacci is planning to send the newsletter to the printer in the coming week. Discussion held on the Philadelphia Cultural Alliance. VP Goldberg submitted a request for Local 77 members to participate in an upcoming event, but the request was denied by the Alliance. EB Fay reported on the Philadelphia Orchestra (POA). The POA Members' Committee and Tour Committee are planning to meet to discuss the numerous contract violations that occurred on their recent European Tour. Discussion held on the upcoming Principal Bass

audition. Discussion held on the Chamber Orchestra of Philadelphia (COP). The COP has a performance scheduled with Mendelssohn Club, and there are concerns around safety. VP Goldberg reported on the Philly POPS. The musicians of the POPS leafleted patrons during the Moody Blues concert series. EB Ansel reported on the Philadelphia Ballet. The musicians of the Ballet recently voted to join the Regional Orchestra Players' Association (ROPA). VP Goldberg reported on Opera Philadelphia. Opera Philadelphia musicians leafleted during their performances at the Academy of Music. Additionally, the musicians have jointly participated in work actions prior to the leafleting such as wearing their union

shirts to all rehearsals. The musicians temporarily left the pit as a show of solidarity, returning for the tuning note shortly before the performance began. S-T Antonacci reported on the latest merchandise acquisition from the new local union printer. Discussion held on finalizing one more order from the out of town printer. EB Fay excused at 11:02am. Discussion held on a conversation with AFM International Political Director Alfonso Pollard regarding live entertainment for an upcoming event for the Coalition of Black Trade Unionists at the Sheraton in Philadelphia. President Trainer reported on her first Executive Board meeting as a newly elected member. Discussion held

on rally musicians to support the various local union campaigns and work actions. EB Suttman motions to adjourn. VP Goldberg seconds. VOTE: 4 approve. 0 opposed. Meeting adjourned at 11:20am.



The Philadelphia Musicians' Relief Fund is accepting applications. Click the image above to apply for relief, or visit the Local 77 website for the application link. Please include supporting documentation and a detailed explanation of your current circumstances to provide us with a complete picture of your situation. Each application will be considered on its own merits. All Local 77 members in good standing are eligible to apply for a one-time award of up to \$1,000.*

All awards are subject to availability of funds

If you have questions or need assistance in filling out the application, please contact us at info@pmrfund.org.

**The Philadelphia Musicians' Union, Local 77 AFM
is a proud member of the Philadelphia Council AFL-CIO.**

